

Glacier Precast Concrete, Inc.

175 Alder Lane
Kalispell, MT. 59901
(406) 752-7163

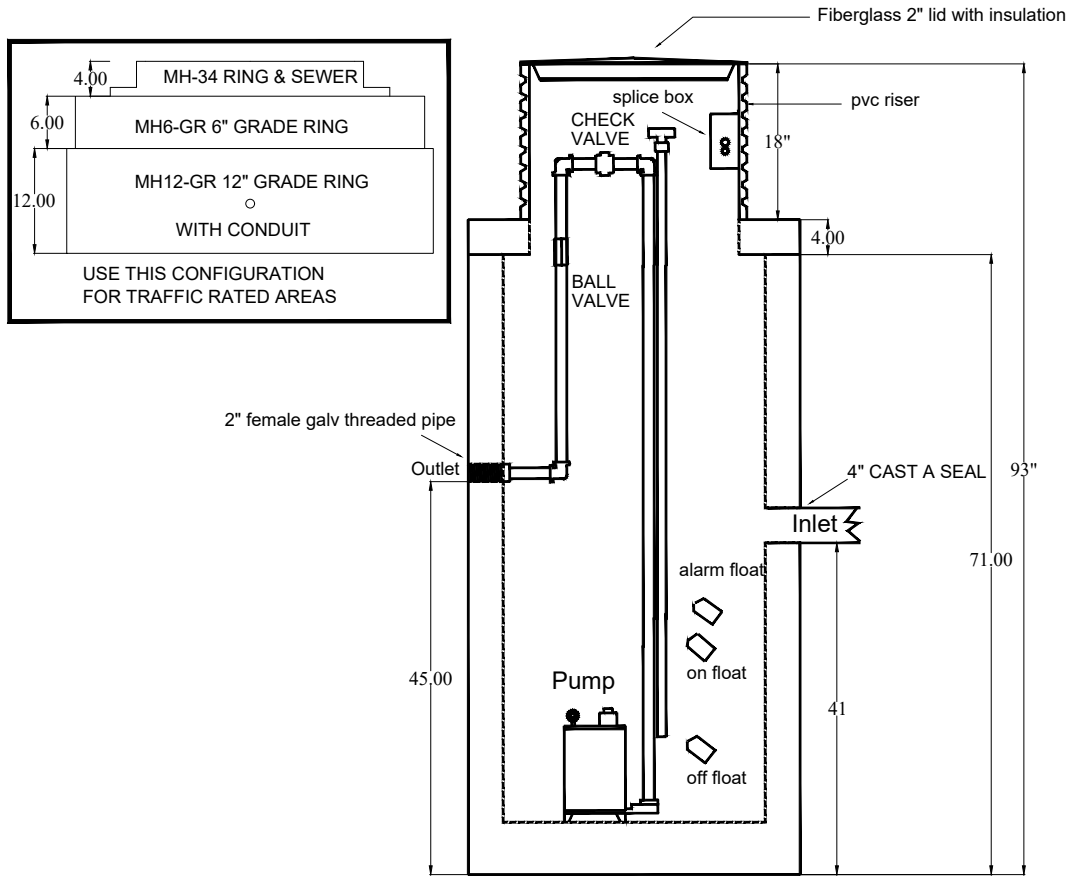
C:\Users\user\Documents\Office\precast\new\loging

SITE:		1		2/28/17
		DRAWING NO.	PROJECT NO.	DATE.
TITLE:	SOLIDS HANDLING TRAFFIC RATED-Standard	NTS	MC	MC
		SCALE AT A4.	DRAWN.	CHECKED.
				REVISION.

AMENDMENTS:

REV:	DESCRIPTION:	BY:	DATE:
A		MC	

93" OUTDOOR SOLIDS HANDLING PUMP PACKAGE



- 1 30" I.D. X 72" CONCRETE R.C.P. WITH 4"WALLS -4000 P.S.I. SULFATE RESISTANT CONCRETE WITH 4" CAST A SEAL & 2" X 2" X 1/2" GALVANIZED THREAD TEE WITH 1/2" STOP
- 1 38" X 24" X 4" CONCRETE LID WITH 24" PRTA
- 1 MA320 EXPOXY KIT
- 1 18" X 24" PVC RISER
- 1 1" GROMMETT
- 1 INSULATED FIBERGLASS LID
- 1 ORENCO S1CT CONTROL PANEL
- 1 ORENCO SB-4 ELECTRICAL SPLICE BOX
- 1 6" FLOAT TREE
- 3 ORENCO MF1P FLOATS
- 1 PUMP INSTALLATION
- 1 MYERS SRM4 SOLIDS PUMP / or CHAMPION CPWA-11 SOLIDS PUMP
- 1 2" SCH 80 MALE ADAPTER
- 2 2" SCH 80 90'S
- 1 2" SCH 80 90 WITH FLOAT BRACKET
- 1 2" SCH 80 UNION
- 1 2" TRUE UNION BALL CHECK VALVE
- 1 2" SCH 40 BALL VALVE
- 2 2" SCH 80 MALE ADAPTERS
- 20' 2" SCH 80 PIPE

MH12-GR 12" GRADE RING
MH6-GR 6" GRADE RING
MH-34 RING & SEWER
TRAFFIC RATED PARTS